

ROKA

Signature

Signature

Signature

Signature

Signature

MORE THAN A DOOR.



HINGES

236

THRESHOLDS

238

LOCKING MECHANISM

242

ACCESS SYSTEMS

246

KEY LOCKS

250

Technology and security systems

232 – 251

CREATIVITY IN DESIGN

In architecture and design, details become the heart of a project, and ROKA's designs fit perfectly into this philosophy. We offer a wide range of fanlights and sidelights that can be customized to meet the individual needs and style of any entrance area. Our innovative approach to design allows us to create unique and functional solutions that harmoniously combine everyday life with individual style and blend in with the architecture of the building.



SINGLE-LEAF DOORS



DOUBLE-LEAF DOORS



SINGLE-LEAF DOOR
WITH TWO SIDELIGHTS

A PERFECT MATCH

Whether you prefer a modern, minimalist style or classic elegance, our variety of designs can fit your vision of the ideal entrance. Each ROKA design is not only a functional element, but also an aesthetic one that enhances the space and creates a first impression full of style and character. Discover the possibilities of ROKA systems and create a unique entrance area that reflects your personal taste and modern approach to design.



SINGLE-LEAF DOOR
WITH ONE SIDELIGHT



SINGLE-LEAF DOOR WITH SIDELIGHTS
AND SEMICIRCULAR FANLIGHT



SINGLE-LEAF DOOR WITH SIDELIGHTS
AND FANLIGHTS

Hinges



ROLLER HINGE



Specification

- Opening mechanism: hinges mounted on the side edge.
- Spaciousness: ideal for narrow passageways.
- Door weight: for doors weighing up to 180 kg.
- Lifestyle: perfect for those who appreciate classic aesthetics and functionality.



Variants



Roller hinge - Color white
RS 2801



Roller hinge - Color Alunox
RS 2802



Roller hinge - Color EV 1 silver
RS 2800



Roller hinge - Malowany RAL
RS 2803



CONCEALED HINGE

Specification

- Opening mechanism: invisible hinges mounted on the side edge.
- Spaciousness: ideal for narrow passageways.
- Door weight: for doors weighing up to 180 kg.
- Lifestyle: perfect for those who appreciate classic aesthetics and functionality.



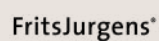
Variants



Concealed hinge - Color black
RS 280



PIVOT HINGE



Specification

- Opening mechanism: pivot axis shifted to the top of the sash.
- Spaciousness: ideal for wide passageways.
- Door weight: for doors weighing up to 500 kg.
- Lifestyle: ideal for those who prefer modern and open solutions.



Variants



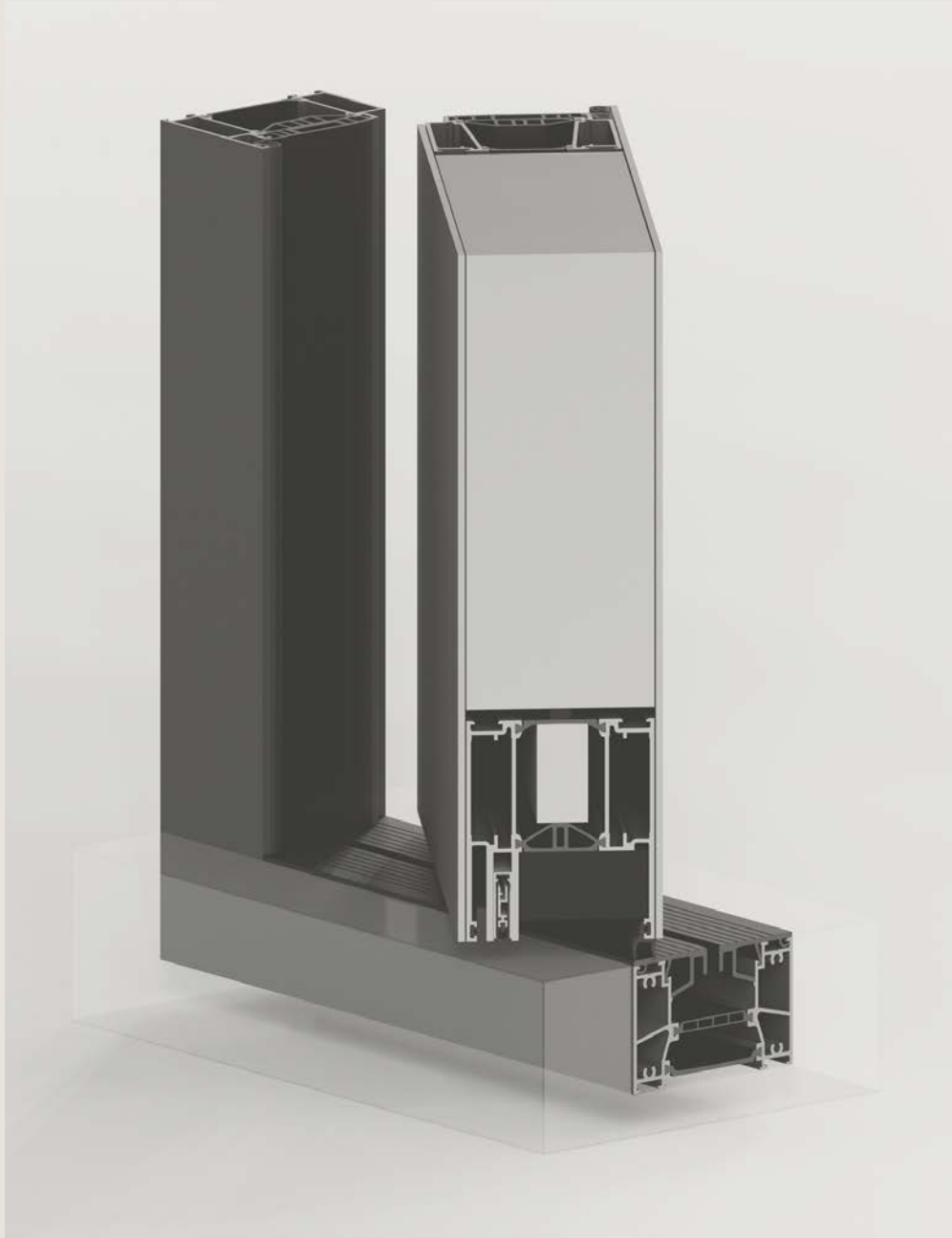
FritsJurgens one system
RS 2805



FritsJurgens m32+ system
RS 2806



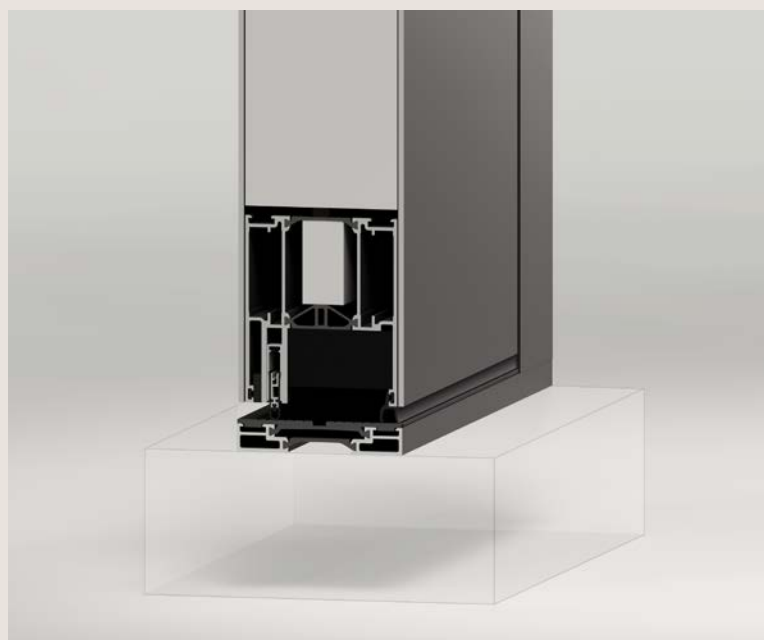
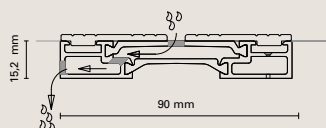
Thresholds for pivot hinged doors



LOW THRESHOLD

Specification

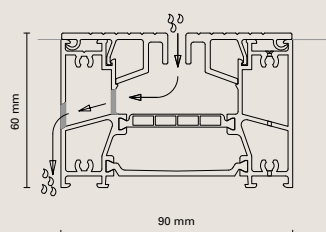
This low threshold, with a height of 15.2 mm, is made of black-painted or anodized aluminum and enables direct installation into existing subfloors – an ideal solution for renovation projects. Thanks to the high-quality thermal break combined with an automatic drop-down seal, it provides excellent insulation and airtightness. The elegant, slim profile is characterized by a subtle design. The system is complemented by cover caps and an integrated automatic drainage system.



HIGH THRESHOLD

Specification

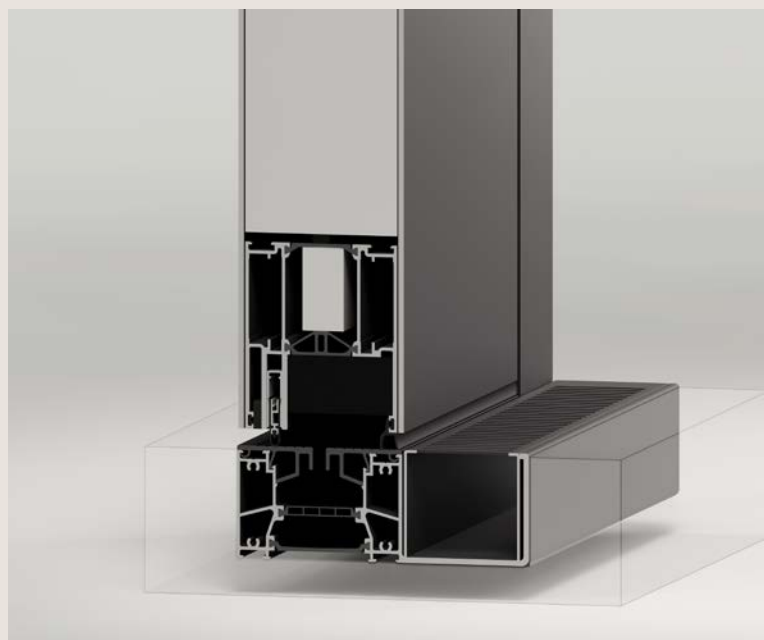
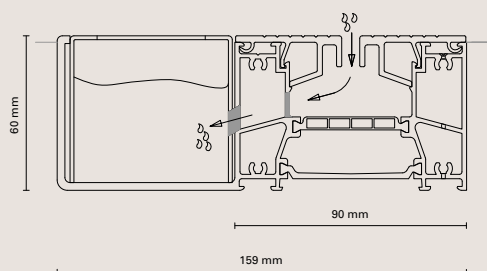
This threshold, equipped with an integrated linear drainage system, is designed for new construction projects where it can be connected to the building's sewage or drainage infrastructure during the construction phase – an exceptionally functional solution. It features a high-performance thermal break combined with an automatic drop-down seal, ensuring outstanding insulation and airtightness. The slim, elegant form is distinguished by its subtle design. The system is completed by cover caps and an integrated automatic drainage system.



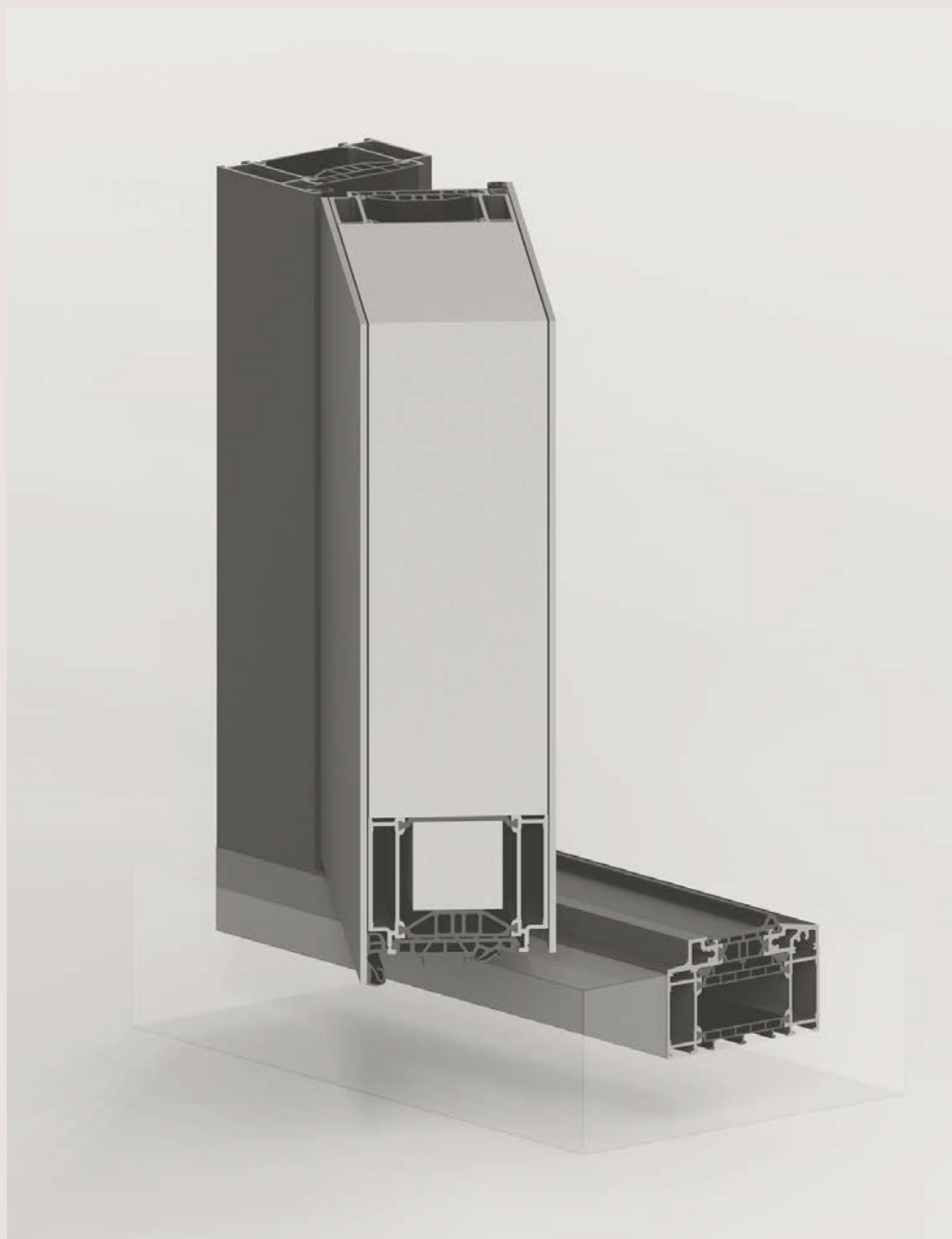
THRESHOLD WITH DRAINAGE GUTTER

Specification

This threshold, including a gutter and linear drainage system, is intended for new construction projects where it can be connected to the sewer system or building water drainage infrastructure during construction – a highly practical solution. It is equipped with a high-quality thermal break and an automatic drop-down seal, providing excellent thermal insulation and airtightness. Its slim and elegant profile is characterized by a subtle design. The system is completed with cover caps and an integrated automatic drainage system.



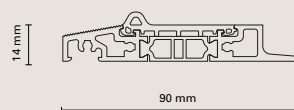
Thresholds for side hinged doors



LOW THRESHOLD

Specification

The 14 mm high threshold is made of aluminum, painted or anodized in black. The integrated thermal break ensures structural stability and high airtightness. It is equipped with an aesthetic EPDM cover that provides additional insulation and effectively conceals fastening holes.

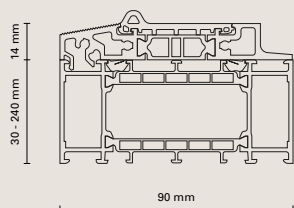


LOW THRESHOLD WITH EXTENSION

Specification

This threshold, with a height of 14 mm and an extension, is made of aluminum and finished in black paint or anodization. The integrated thermal break ensures excellent stability and airtightness. The threshold is fitted with an aesthetic EPDM cover that provides extra insulation and effectively conceals fastening holes.

Extensions available: 30, 40, 50, 60, 70, 80, 90, 110, 119, 130, 150, 200, 240 mm

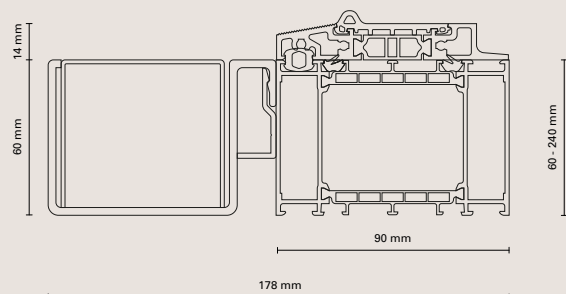


THRESHOLD WITH DRAINAGE

Specification

This 14 mm high threshold features an extension and an integrated drainage gutter. It is manufactured from aluminum and is black-painted or anodized. The integrated thermal break provides high structural stability and airtightness. The threshold includes an aesthetic EPDM cover that offers additional insulation and effectively hides fastening holes.

Extensions available: 60, 70, 80, 90, 110, 119, 130, 150, 200, 240 mm



Locking mechanism



The fingerprint reader is an elegant combination of modern technology and timeless design. It provides instant access through advanced biometric identification, eliminating the need for keys or codes.



PIVOT DOORS – R-CORE SYSTEM – INSTINCT BY MACO

RS 100

For door leaves up to 4000 mm in height:

- 6 x Guard+ with leaf pressure function
- Integrated emergency power buffer (UPS)
- Gateway central unit with acoustic module
- Bluetooth interface

RS 200

For door leaves up to 6000 mm in height:

- 4 x Guard+
- 4 x Guard
- Integrated emergency power buffer (UPS)
- Gateway central unit with acoustic module
- Bluetooth interface

HINGED DOORS – R-CORE SYSTEM – INSTINCT BY MACO

RS 300

For door leaves up to 2500 mm in height:

- 2 x Guard+
- 1 x Guard
- Integrated emergency power buffer (UPS)
- Gateway with acoustic module
- Bluetooth interface

RS 400

For door leaves up to 3000 mm in height:

- 3 x Guard+
- Integrated emergency power buffer (UPS)
- Gateway with acoustic module
- Bluetooth interface

INSTINCT BY MACO – MOBILE APP

With an intuitive mobile app, you can manage access to your home from anywhere in the world. Whether you're granting one-time access to a courier or checking who entered your home—you are always in control.

APP FEATURES:

- Flexible access management (including temporary access)
- One-time entry codes
- Day unlock mode
- Child safety lock function
- Access history and logs
- Construction mode (for installation teams)

TOP-TIER SECURITY

The INSTINCT by MACO system complies with DIN EN 1627–1630:2021-11 burglary resistance standards:

- RC2 resistance class
- Fully concealed locking points
- Tamper-detection sensors on every locking element
- Integration capability with alarm systems and building automation



MACO M-TS – FULLY AUTOMATIC LOCK

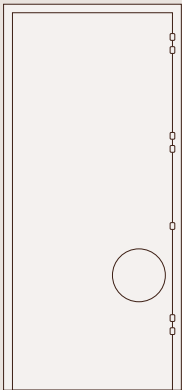
The M-TS lock represents the pinnacle of automatic locking technology—offering ultra-fast and nearly silent operation, unlocking in just 0.3 seconds. Motor-assisted for smooth and reliable performance, it is fully compatible with Smart Home systems, making it an ideal solution for modern, demanding users.

Features:

- Day unlock mode
- Integration with Smart Home apps and systems
- Automatic locking/unlocking
- Smooth and quiet operation
- Suitable for right- and left-opening doors
- Optional: fingerprint reader or code keypad



7-POINT LOCK



RS 1773



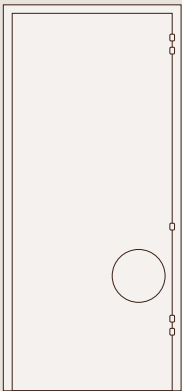
Hook



Latch

7-point locking system: 4 bolts, 3 hooks
Application: For doors 2401–4000 mm in height
Security class: Up to RC3

5-POINT LOCK



RS 1772



Hook



Latch

5-point locking system: 3 bolts, 2 hooks
Application: For doors up to 2400 mm in height
Security class: Up to RC3

GU-SECURY

GU Secury locking systems combine advanced technology with unique design, perfectly complementing the aesthetic of ROKA doors. Thanks to a modular structure and a variety of models, GU Secury adapts flexibly to individual user needs—offering unmatched elegance and the highest level of security.

Specifications:

- Compatibility: Works with BKS access control systems
- Mechanism: Simple and reliable locking/unlocking
- Integration: Compatible with SECUREconnect
- Materials: Stainless steel
- Options: Available in manual and automatic versions
- A-Opener: Optional servo motor available



GU-SECURY ADR AUTOMATIC-OPENER

RS 1760



Hook



Latch



A-opener

5-point automatic lock with motor drive, compliant with DIN 18040, compatible with intercom systems; automatically locked and unlocked via motor.

GU-SECURY DR4 MANUAL

RS 1350



Hook



Latch

5-point manual lock with three bolts and two hooks; mechanically locked and unlocked; compatible with electric strike.

GU-SECURY ADR AUTOMATIC-OPENER SERVO

RS 1761



Hook



Latch



A-opener

5-point automatic lock with servo drive; operated by key or handle/pull bar.

GU-SECURY ADR AUTOMATIC

RS 1750



Hook



Latch

5-point automatic lock with three bolts and two hooks; mechanically opened and automatically locked.

DOOR STRIKE

RS 2100



Electric strike with day function: latching without locking, remote unlocking, enhanced security, access control integration.

DOOR STRIKE

RS 2110



Electric strike without day function: remote unlocking, enhanced security, access control integration.

GU VTS 735 CONCEALED SELF-LOCKING CLOSER WITH SLIDE RAIL AND LOCKING MECHANISM

RS 2320



Concealed door closer with slide rail and hold-open function: increases security, reduces drafts, noise, and energy loss.

Access Control Systems



The ekey dLine reader ensures maximum comfort when using ROKA doors – access modes and system functions can be conveniently configured and controlled via mobile app.

EKEY DLINE – BIOMETRIC SYSTEMS

Specifications:

- Operating temperature range: -25°C to +70°C
- Flat surface sensor
- Finishes: stainless steel, black lacquer, or color-matched to the door
- High resistance to manipulation (e.g., fake fingerprints)
- Intuitive smartphone-based administration
- Fingerprint unlocking
- Remote permission management
- Intuitive user and role management
- Up to 20 fingerprints per system
- Easy synchronization of fingerprints across devices
- Access logs – activation, deactivation, deletion
- Assign different functions to different fingers
- Remote door unlocking
- Push notifications
- Integration with Amazon Alexa
- Remote technical support

The ekey dLine fingerprint readers offer advanced biometric identification in a sleek form. They recognize users in a fraction of a second and allow individual functions to be assigned to specific fingers. Data synchronization, remote control, and voice assistant compatibility (Alexa) make ekey dLine the most intelligent biometric solution on the market.

Installation and Application: System operated via the ekey bionyx app:

- Local Mode – basic functions, no need for Internet/Wi-Fi
- Plus Mode – extended features, requires registration and network connection

Available flush-mounted variants:



Available surface-mounted variants:





EKEY XLINE FOR JUNG LS 990

Specification

Surface-mount fingerprint reader with a classic, minimalist design, ideal for modern entrances focused on aesthetics and elegance.

Variants

- 

ekey xLine is a surface-mounted fingerprint reader in black
RS 2080
- 

ekey xLine Surface-Mounted Fingerprint Reader, white
RS 2081




KEYPAD WITH FINGERSCANNER

Specification

A modern access control solution that combines functionality with elegant design. Thanks to advanced technology, it allows easy and secure door opening with access codes and cards, adapting to the needs of modern users.

Available in powder coated finishes.

Variants

- 

SOREX flush-mounted keypad with fingerprint reader
RS 2007




KEYPAD WITH FINGERPRINT READER AND VIEWFINDER

Specification

An elegant and innovative access control solution that combines modern features with aesthetics. It allows you to open the door with an access code, fingerprint reader and optional access cards. The panel is equipped with a viewfinder. The device is operated and controlled manually or via a smartphone app. It is aesthetically flush with the surface of the frame.

Available for powder-coated surfaces.

Variants

- 

Keypad with fingerprint reader and viewfinder
RS 2090



EKEY XLINE FOR GIRA TX_44 FRAME

Specification

A modern access control solution that combines functionality with elegant design. Thanks to advanced technology, it allows for easy and secure door opening with access codes and cards, adapting to the needs of modern users.

Variants



ekey xLine surface mounted fingerprint reader, white, visible mount
RS 2083



ekey xLine surface mounted fingerprint reader, black, overlay
RS 2082



ekey xLine surface mounted fingerprint reader, silver, overlay
RS 2084



KEYPAD WITH FINGERSCANNER

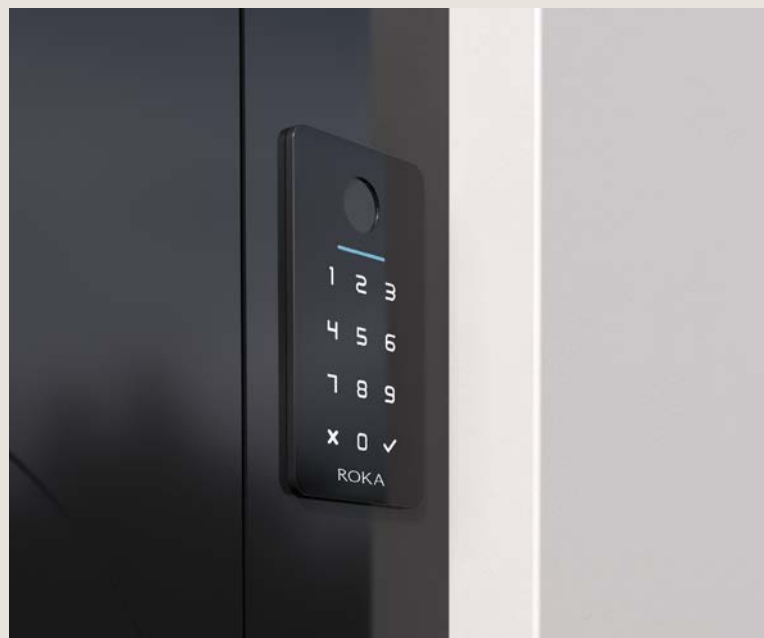
Specification

A modern access control solution that combines functionality with elegant design. Thanks to advanced technology, it allows easy and secure door opening with access codes and cards, adapting to the needs of modern users.

Variants



SOREX keypad with fingerprint reader, overlay
RS 2007_1



KEYPAD WITH FINGERPRINT READER AND VIEWFINDER

Specification

A sleek and innovative access control solution that combines modern features with aesthetics. It allows you to open the door with an access code, fingerprint reader and optionally access cards. The panel is equipped with a viewfinder. The unit is operated and controlled manually or via a smartphone app. It is surface mounted (SMT) to the door frame.

Variants



Keypad with fingerprint reader and viewfinder
RS 2090_1



Key locks



BKS GU LIVIUS

Specification

- Tested according to EN 1303 and DIN 18252
- Bumping protection standard
- 6-pin profile cylinder
- Patented profile series with concealed wave cut-outs
- Cylinder body: brass, nickel-plated, available in black matte and silver colors
- Key: high-quality nickel silver with a decorative blue glass ball
- Key can be combined with SE transponder
- Longer key shank
- 3 keys included

Variants



BKS Livius security cylinder with card and 3 keys included
RS 2012



BKS Livius security cylinder with card and 3 keys included, black
RS 2012_0



BKS GU LIVIUS - KNOB CYLINDER

Specification

- Tested according to EN 1303 and DIN 18252
- Bumping protection standard
- 6-pin profile cylinder with Knob on the inside
- Patented profile series with concealed wave cut-outs
- Cylinder body: brass, nickel-plated, available in black matte and silver colors
- Key: high-quality nickel silver with a decorative blue glass ball
- Key can be combined with SE transponder
- Longer key shank
- 3 keys included

Variants



Livius cylinder with card with 3 keys included and thumbturn
RS 2203



Livius cylinder with card with 3 keys included and thumbturn
RS 2203_1



Livius cylinder with card with 3 keys included and lacquered thumbturn,
RS 2203_0

